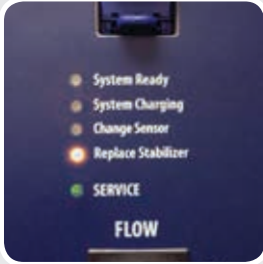


USER GUIDE

HOW TO CHANGE THE STABILIZER KIT

REMOVING THE USED STABILIZER MODULE & BLUE CARTRIDGE FILTER

When the '**Replace Stabilizer**' light is solid yellow, the stabilizer and blue cartridge filter must be replaced.

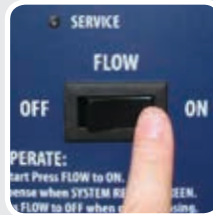


- 1** Turn off main water source.

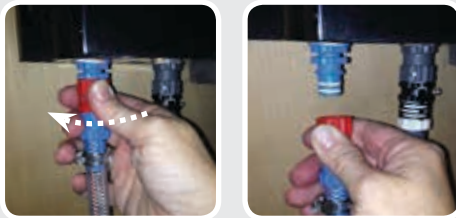


- 2** Press **FLOW** switch to **ON** position to drain water in the hose and release any back flow water pressure.

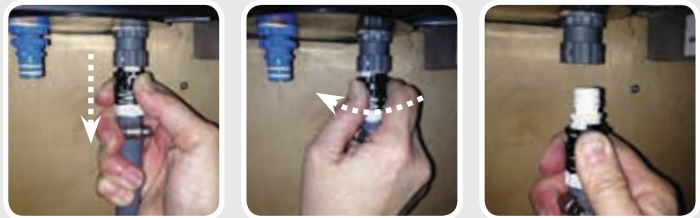
Once drained, press **FLOW** switch to **OFF** position.



- 3** Remove quick disconnect:
a) Turn counter clockwise and release.



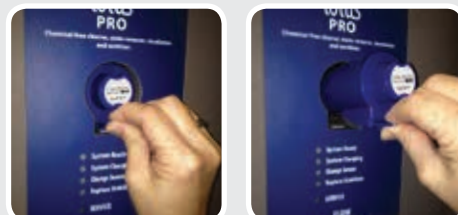
- b) Using your forefinger and thumb, pull down on black spring loaded clip and twist counter clockwise and release.



- 4** Lift stabilizer up, off the wall bracket.



- 5** Remove the blue cartridge filter by lifting the tab up and pull the filter out.



USER GUIDE

HOW TO CHANGE THE STABILIZER KIT

INSTALLING NEW STABILIZER MODULE & BLUE CARTRIDGE FILTER

- 1** Each kit comes complete with the stabilizer module as well as the blue cartridge filter. The blue cartridge filter comes in a white bag inside one of the ends of packaging bulkheads.

Make sure the serial number on the filter's white bag matches the one on the stabilizer.



Stabilization Module and blue cartridge filter kit



Label showing where filter is located in the kit



White bag at one end of package bulkhead



Make sure the serial numbers match

- 2** Remove the protective film off the electronic component on the blue cartridge filter and place into the cartridge slot.



- 3** Place the new stabilizer module on the wall bracket.



- 4** Connect quick disconnect:

- a) Turn the red part of the clip into the blue clip clockwise until locked into position.



- b) Using your forefinger and thumb, pull down on black spring loaded clip and twist clockwise until the connector clicks or locks into place and release.



- 5** Turn on your water supply.

In the first 30 seconds, white residue will appear.

Continue to run the unit until the residue clears up.

